

DENVER LIFE[®]

CULTURE | ADVENTURE | STYLE

2017 DESIGNER SHOWHOUSE

GET INSPIRED WITH BRIGHT IDEAS FROM DENVER'S TOP HOME DÉCOR PROS

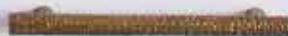


SEPTEMBER 2017

PLEASE DISPLAY UNTIL 10.10.2017 \$4.95



DENVERLIFEMAGAZINE.COM



BY ALISON GWINN PHOTOGRAPHY BY JAMES RAY SPAHN

MODERN ENGLISH

For this year's *Denver Life Magazine Showhouse*, we popped the top on a cramped, one-story Tudor in Bonnie Brae, doubling its size and creating a contemporary—but still cozy—family home

Shakespeare. “Downton Abbey.” Fish and chips. The Beatles. The Mini Cooper. Harry Potter. All those “Keep calm and carry on” signs. Yes, we owe a lot of wonderful things to the British. One item we’d like to add to that list: Tudor homes, whose curving roof-lines and sweet, mullioned windows have long made it a popular style on this side of the pond.

But, like a venerable old English character actor whose style now feels a bit formal and fusty, Tudors often need updates to bring them into the 21st century. That was the case with the 1,200-square-foot, one-story home in Denver’s Bonnie Brae neighborhood that *Denver Life Magazine* has transformed into its 2017 Designer Showhouse.

The newly remodeled home, which sits on a gorgeous, curved, tree-lined street close to Bonnie Brae and Washington parks, now

has four bedrooms and five baths, with 3,100 square feet above ground, a deeper basement that includes a family room and bar (along with the fourth bedroom and bath) and a generous deck, patio space and small yard in back.

“It was a very extensive job,” says Brad Liber, principal at Caliber Construction, who worked with *Denver Life Magazine*, Alvarez Morris Architecture and more than a dozen interior designers to turn the new home into a showstopper. “Tudors are really neat architecturally from the outside, but the interior layouts are terrible—chopped up and divided. We rearranged everything; there is not a single wall in the same place. But we didn’t want it to look so modern that it was out of place on the block—we always try to respect that. Instead, we were aiming for a timeless, modern feel, trying to keep a little bit of the old but do it in a more new way.”

continued on page 95

Contemporary touches like black-framed windows, geometrically patterned drapes and a sleek white chest make the living room feel modern and fun.

All resources and vendors: pages 124-125



PLAN YOUR VISIT: *Denver Life Magazine* 2017 Designer Showhouse

WHERE: 919 S. Columbine St.

WHEN: September 9-24, 10 a.m. to 3 p.m.

COST: \$20 (100 percent of donation benefits Habitat for Humanity of Metro Denver)

denverlifemagazine.com/showhouse

DOUBLE DECKER

By adding a second story covered in vertical Boral siding, moving the entryway door, painting the bricks a uniform color (Benjamin Moore's China White) and, most of all, extending the front with an enormous Pella window unit, architect Carlos Alvarez was able to completely transform the look of the home.





The designers chose a paneled piece of Western art from Deny Designs to create a greater visual impact for visitors first walking into the home.



ENTRYWAY

THE DESIGNERS:

Brandy Willier and Megan Sawatzki, Duet Design Group 303.783.9327 duetdesigngroup.com

THE VISION: “The (fictional) homeowner is a photographer, so we wanted to find a really beautiful piece of photography that would capture the contemporary Colorado lifestyle,” Willier says. “We didn’t want a gallery wall, and we didn’t want a framed piece of art, so we went to Deny Designs, which produces artwork—pillows, fabric and other things—pulled from artists across the country, to find the buffalo.”

WHAT MAKES THE ROOM SPECIAL: “Below the artwork, we layered in other accessories. The vases on one side add height and draw your eye up to the buffalo, and we added another vase on the other side to balance them out. The sun chandelier adds to the rustic feel.”

THE TAKEAWAY: “In an entryway, always have a focal wall,” Willier advises. “It invites everyone in and sets the tone for the house.”



The house will be open to the public from September 9 to 24 from 10 a.m. to 3 p.m. For the third consecutive year, 100 percent of the \$20 admission fee will directly benefit Habitat for Humanity of Metro Denver.

The biggest structural challenge of doing a pop-top like this? “You never know exactly what’s inside before you begin,” says Conor Robinson, project architect at Alvarez Morris Architectural Studio, which did the designs for the remodel. “You’ve got to make assumptions and then you start peeling it away and make decisions about what to keep and what not to. We saved a certain percentage of the exterior walls, took off the entire roof and, in the back, put on an addition for a mudroom and opened it up to the backyard.”

The biggest design challenge? “Making it not look like a pop top,” Robinson says. “Often, architects will take the roof off, leaving a box, and then put another box on top of it, so they look like two different structures that don’t mesh. We tried to create a smooth transition between the existing house and the addition on top. We continued the brick all the way up the front and created the large front gable roof.”

That, along with the huge, multi-paned “glass box” of windows on the front façade, are the signature features in the new home. “It creates a very cool space inside, which could be used as a dining room, a lounge or really anything else,” Robinson says. “But it’s a prominent feature on the exterior, too—it stands out. Our firm’s trademark is taking traditional-looking houses and doing something modern to them. That was one of the moves—along with the clean lines and the black and white exterior palette—that helps make the home feel contemporary.”

And, as they do with many newer builds in Denver, the architects located the open kitchen and family room at the back of the house. “We added large sliding glass doors and an inviting outdoor area so we’d have this seamless indoor-outdoor connection,” Robinson adds.

Inside, to help achieve a livable look, Caylin Engle, lead designer at Caliber Construction, started the process by cre-

ating fictional homeowners, whom she dubbed “the Braes.” Father Mark works in the tech industry; his college sweetheart and wife, Kathy, is a freelance photographer. Fifteen-year-old Adam loves to travel and watch movies and is teaching himself guitar, and Sophie (“10 going on 20”) likes to read and is into fashion, setting out her next-day school outfits every night before bed. Like most Coloradans, the Braes, who also have a puppy named Bonnie, love the outdoors and, as Chicago transplants, hope to learn to ski together.

“I wanted the designers, each of whom was doing a different room, to think of this whole house as a family space, with Mom cooking in the kitchen, the kids hanging out nearby in the living room,” Engle says. “And the designers really responded to that. Corinne Ekle, who designed the girl’s room upstairs, would text me and say, ‘Do you think Sophie likes pink?’ Or ‘Do you think Sophie likes flowers?’ I think it really helped the designers, because instead of just thinking about their little vignettes, they thought about the Brae family.”

Though Engle strove for a cohesive look throughout, the designers still got to push the envelope in each of their spaces. “Each year, we are trying to let the designers explore a little bit more,” she says. In the kitchen, for example, designer Angela Coleman of Luxe Kitchens and Interiors made the space elegant with touches like a Calacatta Caldia herringbone wall but also cutting-edge appliances, from an induction cooktop to a long, multitiered Galley sink prep station that can do practically anything you ask of it, from keeping drinks cold to acting as a serving spot during parties. In the upstairs laundry room, Caitlin Marsh and Christy Brant of Lulu’s Furniture and Décor created a space where a homeowner would actually want to hang out, with bold pops of color on the walls and fun accessories like an oversized clock and desk bell, hourglasses and, best of all, a gorgeous photo of Elizabeth Taylor staring straight out at you. Why, you ask? Why not?

In the basement rec room, Rob Os-gard of Howard Lorton Galleries created

continued on page 99



The Ben Strawn painting, called "Buffalo Soul," and the striped ceiling wallpaper drove the room's palette.



OFFICE

THE DESIGNER:

Pamela Chelle, Pamela Chelle Interior Design
303.349.3760
pamelachelle.com

THE VISION: "I thought this room should feel sort of moody, so I started with the striped wallpaper on the ceiling, then added the amazing Ben Strawn painting, from Walker Fine Art. I chose black for the walls because it gives the office a dark, sexy background, and if you're having a dinner party in the dining room next door, you can turn off the lights and the office won't take away from the ambiance."

WHAT MAKES THE ROOM SPECIAL:

"This room is small and also serves as a passageway from the kitchen and butler's pantry to the dining room, so I wanted to make sure that everything was contained against the wall so we weren't cutting off circulation. But I also wanted things to be interesting, so I put a fiddle fig in the corner in a striped basket, layered two woven wood window shades whose texture really matches the Shaver-Ramsey rug and added a sculptural light on the desk. On the open white bookshelf, I added some pretty bookends and sculptural pieces, along with my grandmother's picture frames. The final touches were a zig-zag chair on one side of the desk and a green tufted ottoman on the other."

THE TAKEAWAY: "In a small room like this, you need to consider all six sides: the four walls, the ceiling and the floor. And every single element has to make an impact; I chose furniture pieces that had beautiful lines on their own but that wouldn't make the space feel cluttered."



The black-framed sliding glass doors into the office not only mirror the capacious front dining room window, but provide a sense of privacy.



“We were aiming for a timeless, modern feel in the house, trying to keep a little bit of the old but doing it in a more modern way.”

—Brad Liber of Caliber Construction

a fun place for everyone, with a bar with double fridges, a large game table tucked into one corner, a reading nook in another and, of course, a large entertaining area for watching Broncos games or “Game of Thrones.” And then there is the striking wallpaper throughout the home: A water-falled rustic-wood pattern in the main-floor powder room, a bank of soft cumulus clouds on one wall in the master bedroom and, perhaps most striking of all, an up-close-and-personal bouquet of pink peonies in the girl’s bedroom.

With the open-air front dining room, whose huge box of glass windows makes it feel as if it’s sitting outdoors, the adjacent pass-through office (painted black so it will recede during dinner parties), an enormous master bath that manages to still feel intimate and a boy’s room with a vaulted deep-blue ceiling and golden chandelier that make the space feel out of this world, the home has something for everyone.

“We’re really pleased with the way it came out,” Liber says. “We think it represents exactly what we wanted it to be, and the neighborhood is ecstatic about it. The previous owner even came through recently and she couldn’t believe it. She actually started crying. She said the house was so well done; she was so happy to see it grow and evolve with the neighborhood and with the next family.”

Getting *that* seal of approval? Now that’s the sign of top-notch design.



DINING ROOM

THE DESIGNERS:

Kim McInnes and
Nikki Holt, Kimberly
Timmons Interiors
303.904.8244
ktinteriors.com

THE VISION: “We wanted the room to be light and bright and modern, with a touch of Colorado and a little bit of glam, too,” McInnes says. Adds Holt: “The light that comes in through that huge window is amazing, and the landscaping and trees outside are just another aspect of the room. We didn’t do window coverings because we didn’t want to hide any aspect of the view. When you stand in the room, you feel like you’re outside.”

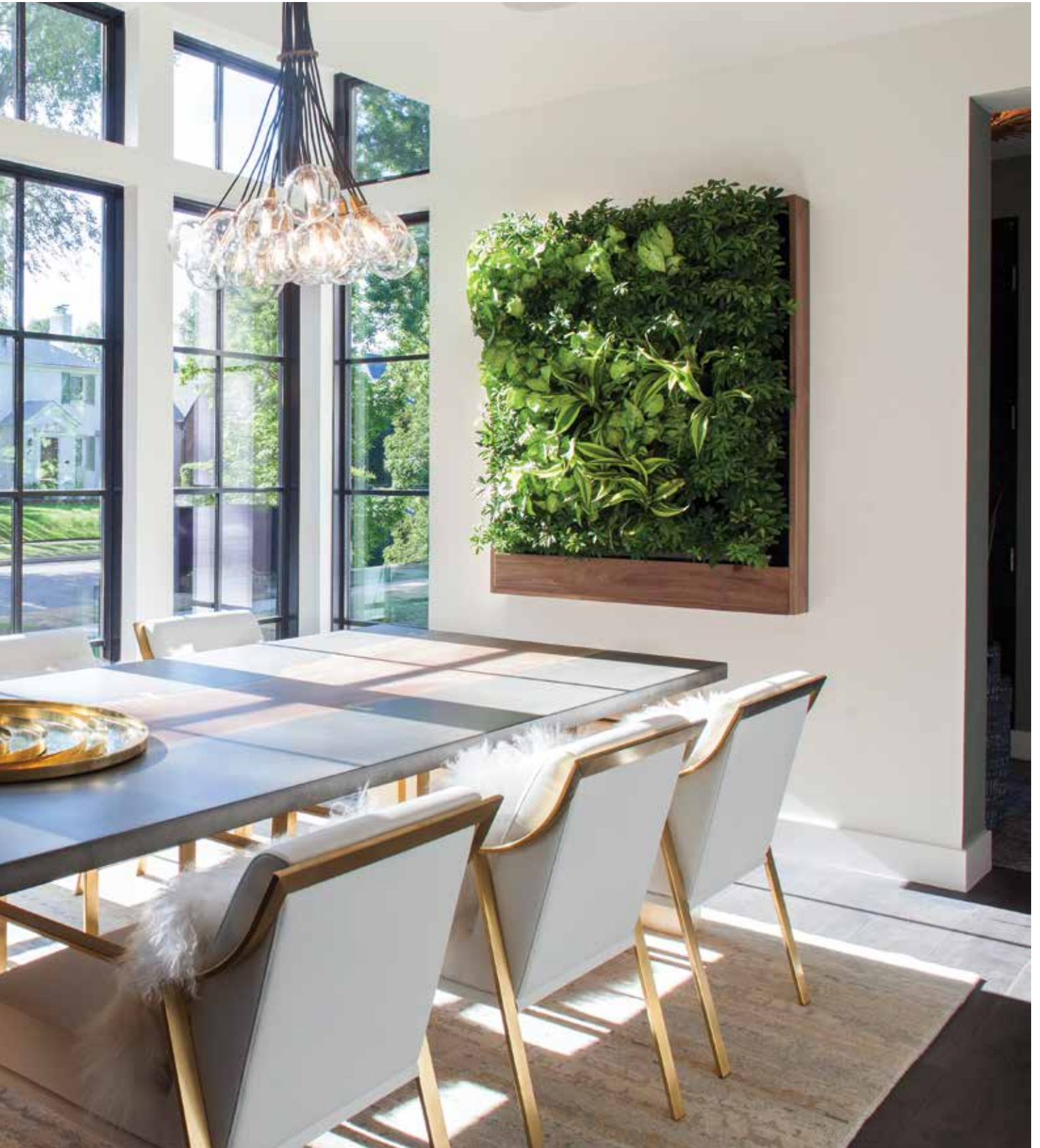
WHAT MAKES THE ROOM

SPECIAL: “We only had two walls to work with, and we wanted to bring the outside in, so we added a living wall,” Holt says. “The maple dining table was actually the first thing we found, and it’s such a focal statement,” McInnes adds. The *pièce de résistance*: that one-of-a-kind credenza, which the designers created themselves.

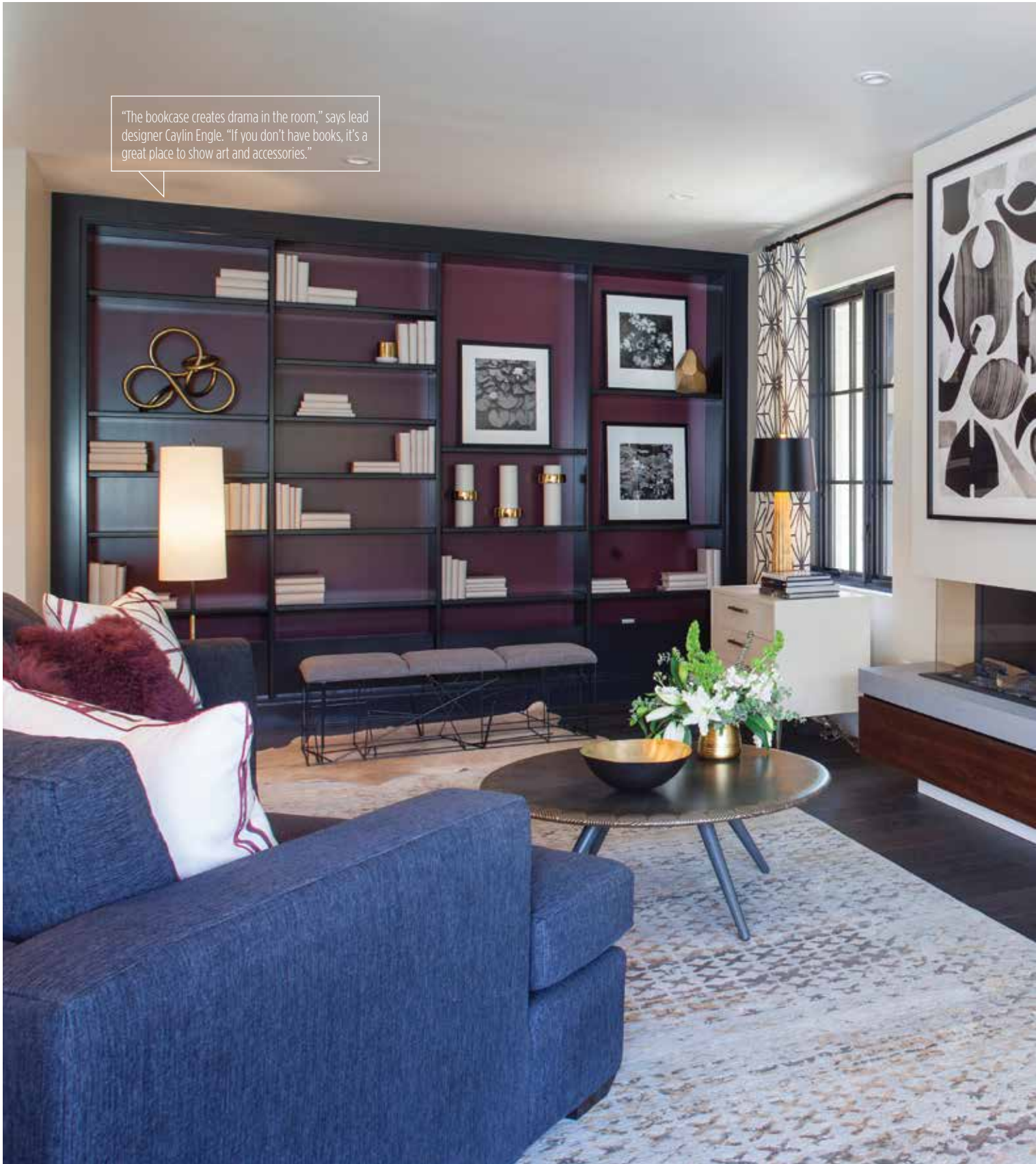
THE TAKEAWAY: “If you have magnificent windows, don’t try to compete with the view; try to incorporate it,” Holt says. “This house is on a beautiful street, and it looks great throughout the year. Why not use it to our advantage?”



The large dining table, “with its clean concrete, live edge and little brass butterflies, ties into everything else in the room,” McInnes says.



"The bookcase creates drama in the room," says lead designer Caylin Engle. "If you don't have books, it's a great place to show art and accessories."





LIVING ROOM

THE DESIGNERS:

Mary Wright and Steve Souza, Design Wright Studios
303.623.4200
designwrightstudios.com

THE VISION: Elegant functionality is the key. Wright and Souza designed with the whole family in mind, using neutral colors and creating multiple seating areas that could fit either a family game night or an adult dinner party.

WHAT MAKES THE ROOM SPECIAL: With its claret color, the built-in bookshelf is the room's centerpiece. Wright and Souza lightened up the room's black tones by using different textures and featuring similar patterns in the rug, artwork and curtains.

THE TAKEAWAY: "A bookshelf with a white background can look empty, and people tend to overfill them," Souza says. "Put an interesting color or texture behind it—like wallpaper or grass cloth—to keep it really simple. You can have some open space and it's nice to look at."



Calacatta Caldia tile set in a herringbone pattern creates a striking feature wall in the kitchen, abutted by high-gloss frameless cabinetry.





KITCHEN

THE DESIGNER:

Angela Coleman, Luxe
Kitchens and Interiors
970.409.1218
luxeki.com

THE VISION: "Since this is an update to a Tudor bungalow, we wanted to make it modern transitional, merging both looks through the high-gloss cabinets and the one wall of wooden cabinets."

WHAT MAKES THE

ROOM SPECIAL: "Appliances are really driving kitchen design right now, so we added a Galley sink (thegalley.com), which has so many components," including multiple drying racks, multiple-tier cutting boards and colanders, condiment serving boards and a dual-tier wash-and-serve basin. "We also added an induction cook-top, which is super easy to clean, can work in either modern or traditional designs and is totally safe for children because the top doesn't get hot."

THE TAKEAWAY: "When you start designing a kitchen, you have to figure out what your lifestyle is—how many kids, how often you entertain—and also how you like to cook. Next, select your appliances and build around those."



Designer Angela Coleman of Luxe Kitchens liked artist Tracy Russell's abstract pieces so much that she put three of them in the kitchen area.





BUTLER PANTRY

THE DESIGNER:

Angela Coleman, Luxe
Kitchens and Interiors
970.409.1218
luxeki.com

THE VISION: "To keep the design cohesive with the kitchen."

WHAT MAKES THE ROOM SPECIAL: "People don't like to see microwaves anymore, so we popped this one underneath a cabinet. It's actually a microwave drawer; you push a button and it opens out."

THE TAKEAWAY: "It's key to have that little space between the rooms, and adding a window makes it feel light and bright.."



HOW TO PULL OFF AN IKEA HACK

What do you do when you see a piece you love that's too pricey? That's what happened with this dining room credenza, the brainchild of Nikki Holt and Kim McInnes of Kimberly Timmons Interiors. "We both come from model home backgrounds, so we are into DIY," Holt says. "We thought, 'We can do this! We can create our own credenza.'"

1. GET INSPIRED

"We saw a credenza online that we loved but that was out of the budget," says Holt. "But we thought we could find people to create one just like it."

2. GO BASIC

"Believe it or not, the main body of this piece is a basic cabinet from IKEA," Holt says.

3. TURN TO DAD

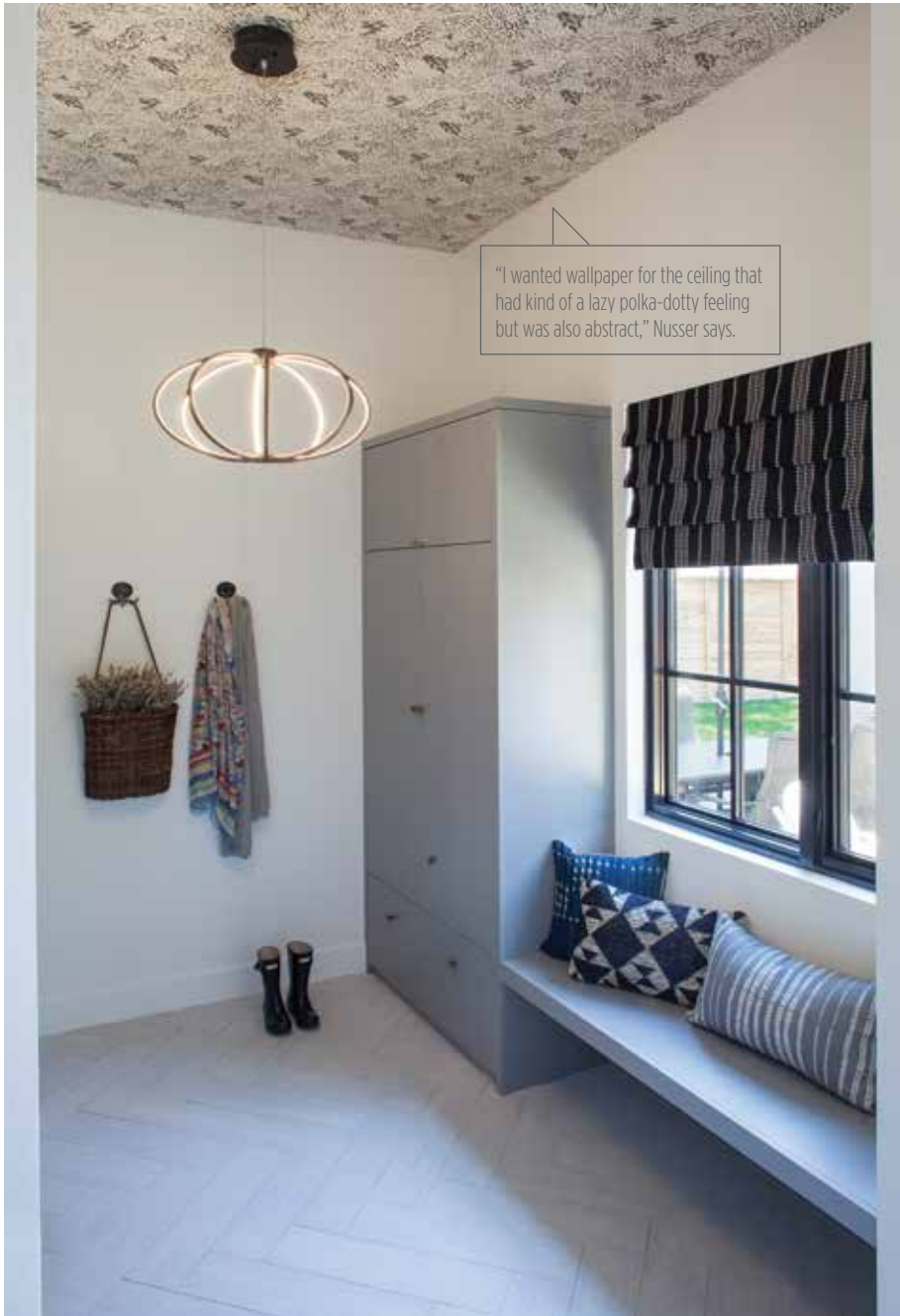
"I actually recruited my dad to help," Holt adds. "He built us a clean-lined base to go on the bottom and tie in with the wood in the room."

4. EMBELLISH

"We showed Custom Furnishings a picture of the doors we wanted with that crazy geometric nailhead pattern, and they made it," Holt says.

5. KEEP IT QUIET

"This is a fraction, fraction, fraction of the cost of the one we admired," McInnes says. But there's no need to tell that to dinner guests, is there?



POWDER ROOM

THE DESIGNERS:

Brandy Willier and
Megan Sawatzki, Duet
Design Group
303.783.9327
duetdesigngroup.com

THE VISION: "We wanted a design that would provide high contrast in this space, and the best way to do that was to use a lot of textures," says Willier, of Inside Stories by Duet Design Group.

WHAT MAKES THIS ROOM SPECIAL:

"We carried the textured wallpaper up one wall, across the ceiling and down the opposite wall to give the illusion of higher ceilings and to accentuate the architecture," Willier says. "The light fixture from Arteriors provided the bling; we added gold feathers to the wall because this is an outdoorsy family, as well as a reclaimed-wood dog on the floor because they are dog lovers."

THE TAKEAWAY: "The powder room is a small space, and it's the one room where you get to have really crazy fun," she adds. "It's almost a room to entertain."



MUDROOM

THE DESIGNER: Jamie Nusser, J Designs / 925.998.4289 / jinteriordesigns.com

THE VISION: "Who doesn't want a large mudroom?" says designer Nusser. "I knew that the room would mostly be covered in cabinets, so I added wallpaper to the ceiling and an interesting herringbone porcelain tile to the floor."

WHAT MAKES THIS ROOM SPECIAL: A built-in desk; a "drop station" that allows for quick recharging of phones; a cozy spot for dog bowls and even a dog bed; a bench for sitting down to pull off boots; full-length cabinets for long coats as well as shorter cubbies for backpacks and boots.

THE TAKEAWAY: "When doing a mudroom, keep it simple. Remember that you're going to fill it up with coats, backpacks, sports equipment and dog leashes, so the more closed storage, the better."





The designers wanted high contrast so they chose a deep green for one wall and carried a textural wallpaper up and over to accentuate the architecture.

MASTER BEDROOM

THE DESIGNER:

Cassy Kicklighter Poole;
Kaleidoscope Design
303.521.7297
kaleidoscopedesign
denver.com

THE VISION:

"I wanted the suite to really be about relaxation, calm and serenity. So I went with neutral tones and whites."

WHAT MAKES THE ROOM SPACE SPECIAL:

That cloud mural on one wall is echoed in a painting over the concrete fireplace done by Kicklighter Poole herself. To accessorize, she mixed wood tones, metals and black and white paint.

THE TAKEAWAY: All you need to do a successful mural is a bare wall. "There's usually one wall where you think, 'What do I do with this?'" she says. "Rather than fill it with furniture, put something there that gives it some definition and pop."

To accent the mural, Kicklighter Poole went antiquing: "I repurposed the dresser by swapping out the hardware to make it look more modern."





Concrete, says Kicklighter Poole, doesn't have to feel cold. She covered the fireplace with a warm grayish-beige tone that is stamped to look like real wood.





"This bathroom is a sophisticated play on organic. We added an antique ladder for towels and hung plants and other organic pieces that play off of it."



MASTER BATH

THE DESIGNER:

Cassy Kicklighter Poole;
Kaleidoscope Design

THE VISION: To complete the suite by extending the relaxing environment from the master bedroom.

WHAT MAKES THE ROOM SPECIAL: The tiles repeat the calming cloud mural from the master bedroom. Poole accessorized the unique tile work with lots of greenery, simple cabinets and forest wallpaper in the toilet room.

THE TAKEAWAY: Don't ignore small spaces. Instead, make them stand out with sophisticated, whimsical wallpaper. "Little spaces like the powder and toilet room are often left unnoticed," she says. "Why not step it up and give those some visual interest?"





Don't be afraid of using black on walls, says Kicklighter Poole. Here, she uses the color to make the metallic sconces above the vanity pop.



Closet Factory, which did all of the closets in the home, made a dream master closet with separate his and her wardrobes that maximize space with plenty of shelves, hidden hampers and hooks for ties and bags. 8480 Upland Drive, Englewood, closetfactory.com





LAUNDRY ROOM

THE DESIGNERS:

Caitlin Marsh and Christy Brant, Lulu's Furniture and Décor
303.756.2222 / lulusfurniture.com

THE VISION: "We tried to play off the notion of time, with the large clock, the oversized bell and the hourglasses, since you always think about time when you're doing laundry," Marsh says.

WHAT MAKES THE ROOM SPECIAL: Where do we begin? First, the wallpaper. "That little pop of orange throughout this paper is fun and brings the room to life," Marsh says. Next, the bell. "It's fun, like 'Your laundry is finished—ding-ding! Here's the maid,'" she adds. And, of course, Liz. "She's just so beautiful, and we love the way she's looking at you. She just seemed appropriate."

THE TAKEAWAY: "The laundry room is tricky. You want it to be pretty and to make a statement, because you spend a lot of time there!" Marsh says. "And in this case, the laundry room is the first thing you see as you get to the top of the stairs, so you want it to be fun and something that people will remember."





GIRL'S ROOM

THE DESIGNER: Corinne Ekle, c2Design
720.457.1600 / c2designinteriors.com

THE VISION: "I was designing for a hypothetical client: a girl who is 10 going on 20. She's a girlie girl in middle school who loves fashion and loves to read. With that in mind, I wanted to create a space that could grow with her but still have some really fun, feminine elements to it."

WHAT MAKES THIS ROOM SPECIAL: The peony mural by Area on the wall behind the bed. "Right now, big, bold floral prints are coming back, and this wall covering is very feminine but also has a nice sophistication," Ekle says. "I added a young, feminine bed because it looks like a garden gate up against the mural, painted the ceiling a semi-gloss blush color and added an over-scale drum light to parallel the large, circular peony shapes." Finally, the hanging basket chair. "I wanted to create a little reading nook for Sophie, and this is just so whimsical. We had extra blocking put into the ceiling so it can hold someone."

THE TAKEAWAY: "A lot of people, when they design a girl's room, think they should go with whatever is trendy: hot pinks, unicorns. But you have to think about it from a long-term perspective and design in things that can grow and evolve with them, so you only have to change little aspects of the room over the years."





"The gorgeous chandelier is like a glowing orb, which I wanted to set apart from the rest of the room," Sillery says. "That blue frames it and anchors the room."

BOY'S ROOM

THE DESIGNERS: HW Home design team, led by Bryan Sillery, with Michelle Cowan and Ron Werner
303.779.9500 / hwhome.com

THE VISION: "The boy we envisioned living here is no longer playing with Legos but also not running off to college anytime soon," says Sillery. "We wanted something that was fun and playful, not overly masculine and not overly stuffy, but that would include good pieces that he could take to college with him in a few years and that could take him through his 20s and even into his 30s. We wanted to do a space-y, ethereal idea, from the sun-like chandelier to the moon art to the circles on the front of the dresser."

WHAT MAKES THE ROOM SPECIAL: The modern, golden pendant light hanging from the vaulted ceiling, which is painted a rich royal blue. His other favorite touch: the towering twin bed. "I knew we'd have high ceilings to play with and I wanted the bed to be dramatic, fun and lighthearted—not wimpy. I love the super-high headboard and the tie-dye fabric," says Sillery.

THE TAKEAWAY: "A bedroom is a private space, so it's one area of the home where you can do whatever you want. It doesn't have to be serious, and it doesn't have to be completely designed. You want to invest it with your personality—it's the No. 1 place in your home that should be exactly you."



LOWER-LEVEL FAMILY ROOM

THE DESIGNER:

Rob Osgard, Howard
Lorton Galleries
303.831.1212
howardlorton.com

THE VISION: "Though the room was going to be contemporary, I didn't want it to be cold," Osgard says. "I wanted to add character and warmth to the space to make it more inviting. Also, the ceilings were low, so I wanted it to feel comfortable and not claustrophobic; I painted a really warm gray on the walls and ceiling, so it was one continuous color."

WHAT MAKES THE

ROOM SPECIAL: "With the space being an L shape, I wanted to add either a pool table or a piano or something. I chose a game table next to the bar area because so many clients go down to the basement with company to hang out—watch a movie, eat dinner, play cards. You don't want to run up and down the stairs; you can just settle in."

THE TAKEAWAY: "I advise clients to really invest in basement spaces like this. Some people do a really nice formal living room but then put a velvet rope across it—that's like throwing away money. Why not put something really high quality but serviceable, like the leather sectional we have here, in the space that you are going to use most?"



"Everything in this space is low-slung because of the ceiling height. It's clean, modern and sophisticated without being formal," Osgard says.





Luxe Kitchens and Interiors designed the bar area, including a wall peg system for storing bottles and two Specialty Appliance refrigerators.

WHAT'S NEW IN HOME DESIGN?

Our Showhouse designers reveal the one 2017 trend they're most excited about.

OVERSIZED GRAPHICS

"I love the idea of taking a classic print, like a floral, and featuring it in a larger scale to create a striking, bold, oversized statement in a space."

—Corinne Ekle of C2 Designs

COLOR AND PATTERNS

"I strive to provide clients with classic, timeless designs, but I do like that color and patterns are coming back in design products, instead of seeing only neutrals everywhere!"

—Pamela Chelle of Pamela Chelle Interior Design

DARK, MOODY PAINT

"Right now I am most excited about incorporating dark and moody paint colors into designs and the resurgence of pattern, especially in wallpaper and fabrics."

—Jamie Nusser of J Designs

THE RETURN OF ART DECO

"We are ecstatic that Art Deco is making a comeback, and that design is moving away from the rustic, industrial look. The polished materials, bold colors and symmetry bring a sense of glamour and

luxury back to design and people's homes."

—Caitlin Marsh and Christy Brant of Lulu's Furniture and Décor

PAINTED CEILINGS

"We like to think of the ceiling as the fifth wall in a space. It is a great opportunity to infuse color, pattern and texture in a nontraditional way."

—Corinne Ekle of C2 Designs

LESS IS MORE

"That is the sweetest trend! I love the ability to create one space with clever features that do double duty, fold up,

tuck away or simply become the only product you need for all of one's purposes. Being a sustainable designer, I strive to achieve more with less every time."

—Bryan Sillery of HW Home

WARMER NEUTRALS, NATURAL TEXTURES AND MORE INTERESTING SHAPES

"We have had a 10-year span where things have been reduced to very clean, simplified lines and the graying of all but accent colors. Now we are seeing additional warmth and more saturated colors, which, to

my eye, bring more interest and warmth to rooms.

—Rob Osgard of Howard Lorton Galleries

MIXING STYLES IN A SINGLE SPACE

"From mountain modern to urban glam, we are loving all combos. Something we've been really fond of is when a space has modern architecture and clean-lined furniture elements mixed with a few found antique items. We feel like mixing the unexpected is a great way to stand out."

—Nikki Holt of Kimberly Timmons Interiors



LOWER-LEVEL GUEST BEDROOM

THE DESIGNER: HW Home design team, led by Bryan Sillery, with Michelle Cowan and Ron Werner
303.779.9500 / hwhome.com

THE VISION: “We wanted this space to be sexy and warm—a little bit sensual but not in your face. So we played with scale by putting in a large headboard, which maximizes the space, and an oversized picture of Tina Turner—I mean, what’s sexier than Tina Turner’s legs?—and then adding the layered side tables.”

WHAT MAKES THE ROOM SPECIAL: “This is a basement room, and you don’t want anyone to feel cold down there. I have a bit of a crush on fur at the moment, so I added the faux fur throw at the end of the bed, a hair-on-hide seat on the acrylic chair in the corner and Mongolian natural hair ottomans.”

THE TAKEAWAY: “In a guest room, you want to make sure that anyone who uses it, whether it’s a visiting mother-in-law, a friend or a nephew, is comfortable—that there’s enough space around the bed and it’s simple but you’re not leaving anything out.”





Want to host fun backyard bashes far into fall? Get a fire pit. "It'll add warmth and ambiance," Rokosz says. "And extends your season," Kenison adds.





The new oversized two-car garage, clad in Boral siding that matches the home's second story, provides privacy for the intimate backyard entertaining space—and storage for this 2017 Volvo XC90 T5 luxury SUV from McDonald Volvo, 6040 S. Broadway, Littleton, mcdonaldvolvo.com (suggested retail price: \$54,940). Also of note: The easy-to-clean epoxy floor by Specialty Poxo Coatings that protects concrete from staining and deterioration.

PATIO

THE DESIGNERS:

Shawn Rokosz and Lindsay Kenison, Christy Sports / various locations christysports.com

THE VISION: The designers wanted to bring outdoors the kind of comfortable seating and fun party pieces you might find inside. "This spot is a great place to relax on nice, cool evenings or have friends over for a barbecue in the summer," Rokosz says. "We really tried to focus on making a space that has a little bit of everything."

WHAT MAKES THE ROOM SPECIAL:

The patterned lounge chairs: "That's what we based everything else off of because we fell in love with that fabric," Rokosz says. Other great features: the bar table, built-in bench and outdoor kitchen featuring a fridge, side burner and utensil and paper towel holder.

THE TAKEAWAY:

To get the most out of the space, choose your big patio pieces in neutral colors, but go bright with accessories. "Throw pillows or cool pieces like our stools really brighten up the space," Kenison adds. "And if in two or three years, you're tired of those accessories or colors, they're easy to change out."



A nice house accessory? The 2017 Audi A7 quattro Tiptronic, \$68,800 at Audi Denver, 6060 S. Broadway, Littleton, audidenver.com, parked in front.



2017 SHOWHOUSE RESOURCES

ENTRYWAY PAGE 94

Artwork: Deny Designs, 3890 S. Windermere St., Englewood, denydesigns.com // Bench and accessories: HW Home, 199 Clayton Lane, hwhome.com // Rug: Shaver-Ramsey, 2414 E. Third Ave., shaver-ramsey.com // Light fixture: The Lighting Studio, 1024 Cherokee St., thelightingstudio.com // Closet system: Closet Factory, closetfactory.com

OFFICE PAGES 96-97

Area rug: Shaver-Ramsey // Window coverings: Cherry Creek Shade & Drapery, 2438 E. Sixth Ave., cherrycreekshadeanddraperys.com; Fabric: Carolina Irving Textiles, carolinairvingtextiles.com // Desk: Walnut top: Room & Board, roomandboard.com; lacquer base: CB2, cb2.com // Ceiling wallpaper: Lee Jofa, leejofa.com // Desk chairs: Design Within Reach, dwr.com // Zig zag chair: Modern Luxury Furniture, usmlf.com // Fabric & trim: M&J Trimming; mjtrim.com // Bookcase: West Elm, westelm.com // Lighting: Visual Comfort & Co., visualcomfortlightinglights.com // Painting: "Buffalo Soul" by Ben Strawn, 56-inches by 48-inches acrylic on canvas, Walker Fine Art, 300 W. 11th Ave., walkerfineart.com // Plant basket: Serena & Lily, serenaandlily.com // Ottoman: Lulu & Georgia, luluandgeorgia.com // Accessories: Arteriors, arteriorshome.com; Wisteria, wisteria.com; West Elm; Crate & Barrel, crateandbarrel.com, and vintage finds

DINING ROOM PAGES 98-101

Rug: Shaver-Ramsey // Art: "Steady" 80-inches by 120-inches steel-plate etching by Carmiella Salzberg, Walker Fine Art // Lighting: "Gambit 19-Lite Chandelier" by Teresa Richardson, The Lighting Studio // Living wall: Jean-Pierre Sijmons at City Landscaping, 11977 Blakeford St., Parker // Table: Donnie Criswell

at DIY ("Design It Yourself") Furniture, 5850 E. Evans Ave., diyfurniturestore.com // Textured brass trays: Roost, modishstore.com // Chairs: Valentine Dining Chair, All Modern, allmodern.com // Pillows: "Becky" fur lumbar pillows by Zipcode Design, allmodern.com // Credenza: Custom designed by KTI from IKEA box and glass top, with custom upholstered doors by Custom Furnishings, and wooden base by Larry Romero // Decanters: Z Gallerie, zgallerie.com // Credenza lamp: Revelation by Uttermost, uttermost.com

LIVING ROOM PAGES 102-103

Rug: Shaver-Ramsey // Sectional: The MT Company, themtcompany.com // Coffee table: EJ Victor, ejvictor.com // Chests, stools and drapes: Kelly Wearstler, kellywearstler.com // Lamps: Visual Comfort and Co., visualcomfortlightinglights.com // Throw pillows: Ryan Studio, ryanstudio.biz // Bookcase accessories: Curated Kravet, curatedkravet.com // Metal bowls: Tom Dixon, tomixon.net // Drapery rods: Ona Drapery, onadrapery.com // Fireplace: Element4-Trisore 140 // Fireplace surround: Distinctive Mantel Designs // Fireplace art: Metropolitan Frame Company, metropolitanframe.com // Claret paint: Benjamin Moore, benjaminmoore.com

KITCHEN PAGES 104-106

Cabinetry: Designed by Plato Woodwork, platowoodwork.com, provided by Luxe Kitchens & Interiors, luxeki.com // Cabinet hardware: Emtek, emtek.com, available at Luxe Kitchens and Interiors // Leather bar stools: Crate and Barrel // Island stone: Calacatta gold silestone, Cosentino, cosentino.com Fabricator: Charlotte Foley, Colorado Stone, Ltd., 4244 S. Natches Court, Englewood // Backsplash: Calacatta Caldia 3-inch by 12-inch herringbone tiles, Decorative

Materials, decorativematerials.com // Lighting: Visual Comfort and Co. // Appliances: Specialty Appliance, buyfromsa.com; Jenn Air, jennair.com // Galley sink: Luxe Kitchens & Interiors // Artwork: Tracey Russell, traceyrussell.com // Table: Pier 1 Imports, pier1.com

MUDROOM PAGE 108

Tile: Embers White Matte 6-inch by 24-inch tile in herringbone pattern from Decorative Materials, decorativematerials.com // Light Fixture: Leggero, Black by Eurofase Lighting, eurofase.com // Wallpaper: Forest Floor by Hygge & West, hyggeandwest.com // Cabinets: Barchs Woodworks, barchswoodworks.net // Cabinet hardware: Criterion Knob in bronze, Fused Handle in brushed brass, Anthropologie Home, anthropologie.com // Drapes: Fabric: Boho Stripe, Black, by Tonic Living, tonicliving.com // Fabrication: Window Decore and More, 3101 E. 52nd Ave., windowdecore.com // Pillows: The Citizenry, the-citizenry.com; Loom + Kiln, loomandkilo.com; Lolo Rugs, loloirugs.com, and custom-made // Fabric: Camino, Conch by Tonic Living, tonicliving.com; Sable in color Noir by Clarke & Clarke, clarke-clarke.com // Fabrication: Window Decore and More // Rug: Gray floor mat by Nate Berkus for Target, target.com // Plants and pots: ZZ plant and jade, Paulino Gardens, paulinogardens.com // Candle: Yellow Barn Candles + Homegoods, 27091 Barkley Road, Conifer

POWDER ROOM PAGE 109

Art and accessories: HW Home // Light fixture: The Lighting Studio

MASTER BEDROOM PAGES 110-111

Pierre Frey mural: WallTawk, walltawk.com // Bed: Lark Manor, at home stores // Antique dresser and

lamps: Dwell Antiques and Home, 5910 S. University Blvd., Greenwood Village, dwellantiques.wordpress.com // Chandelier: Tech Lighting, techlighting.com // Fireplace: Element4-Trisore 95 // Fireplace surround: Distinctive Mantel Designs // Fireplace art: Hand-painted by Cassy Kicklighter Poole // Concrete fireplace "wood": Distinctive Mantel Designs Inc., distinctivemantel.com // Rug: Shaver-Ramsey // Drapery: Patti Brooks from Design Essentials, 720.226.6306 // Bed fabric: Kravet Inc., kravet.com // Saro chair: NyeKoncept, nyekoncept.com // Blanket: HomeGoods, homegoods.com // Pillow, wood end table, floor light and candleholder, books and bookends on antique dresser: West Elm // Plant and white decoration on top of wood end table: World Market, worldmarket.com and West Elm // Mirror: allmodern.com // End tables: Kaleidoscope // Floor plant: World Market // Floor candles and candle holders: Tahari Home, available at home stores // Closet system: Closet Factory

MASTER BATHROOM PAGES 112-114

Drapery: Patti Brooks from Design Essentials, 720.226.6306 // Linens: Kravet Inc. // Wallpaper: Cole & Son Wallpapers, cole-and-son.com // Ladder, wood stool and baskets: Dwell Antiques and Home // Hanging planters and plants, body-care accessories and accessories by sinks: World Market // Tub: MTI Baths, mtibaths.com // Body-care tray: West Elm

LAUNDRY ROOM PAGE 115

Wallpaper: York Wallcoverings at Guiry's, 5475 Leetsdale Drive, guirys.com // Lamp: Arteriors Home // Hourglasses: BIDKhome, bidkhome.com // Bell: Go Home Ltd. // Artist books: Edward Lawrence // Bookends: Cyan Design // Cactus: BIDKhome // Elizabeth Taylor: Four Hands, fourhands.com // Clock: Newgate; Cowhide: Tandy Leather, all available at Lulu's Furniture and Décor, lulusfurniture.com

GIRL'S BEDROOM & BATH PAGE 116

Wallpaper: Area Environments, arearenvironments.com, and Carter Inc., Denver Design District, denverdesign.com // Wall paint: Benjamin Moore Yorktowne Green—HC 133 // Ceiling paint: Benjamin Moore Warm Blush—892, semigloss // Other wall paint: Benjamin Moore Sail Cloth—OC-142 // Full metal-framed bed: Lark Manor, at Wayfair, wayfair.com // Nest chair: La Fleur Swingasan, Pier 1 Imports // Marble lamps: Charles Eisen & Associates, eisenassociates.com, Denver Design District // Cork side table with marble top: Lexington Home Brands, lexington.com, Denver Design District // White/birch nesting tables: Nordstrom, nordstrom.com // Natural woven stool: HW Home // Comforter: Pottery Barn Teen, pbteen.com // Custom throw pillows: Fabric by Dura-lee, fabrication by Anna Nguyen // Fur throw pillow: Lexington Home Brands // Accessories: HomeGoods, c2Design Interiors // Floor mirror, white sheets, shower curtain, bathroom wall art: Target // Bath tiles: Decorative Materials // Lighting: The Lighting Studio // Vanity hardware: Hickory Hardware, hickoryhardware.com // Closet system: Closet Factory

BOY'S BEDROOM PAGE 117

Bed: Custom Empire twin bed in Bali Driftwood // Table lamps: Tamarind // Oak dresser and nightstands: Collins Set // Leather chair: Braden in Durango Smoke // Artwork and accessories: "Planetary Series" in blue, green and purple; "Molten" wall art; "Streets of London" print; vintage bowling ball set; 16-inch crumpled vases; gold orchid ceramic pots; Ming zodiac figurine; large iron jack; New Yorker tray; Norfolk safe deposit box, all at HW Home // Closet system: Closet Factory // Bathroom artwork: "Basket of Kittens" by Erin Ames Ault, erinamesault.com; "Pop Tart" prints, HW Home

LOWER-LEVEL FAMILY ROOM PAGES 118-120 ENTERTAINMENT AREA

Two-piece sectional

with chrome legs: Bracci Sofas, braccisofas.com // Teal and white pillows: Lexington Home Brands // Textured throw: Howard Lorton Denver Furniture Galleries, howardlorton.com // TV console: Sligh Furniture // Flowers on console, coffee table, silver drink table: Flower Art Denver, denverflowerart.com // Black vases: Cyan Design, cyandesign.biz // TV and wireless audio: Eric Thompson at The Audio/Video Specialists, theavspecialists.com // Black matte prints: Art and Frame, artandframesource.com // Cut-velvet Ikat chairs: Taylor King, taylorking.com // Silver drink table: Palecek Furniture, palecek.com // Teal leather and chrome chair: Taylor King // Glass and chrome end table and coffee table: Arts Guild of America, artsguildofamerica.com // Bronze tray: Palecek Furniture // Asia Cloud table lamp: Currey & Company, curreycodealers.com // Framed art work on glass: Iconic Pineapple, iconicpineapple.com // Agates on stands: Chelsea House, chelseahouseinc.com // Fern custom throw pillows: Howard Lorton Galleries

LIBRARY RETREAT Floor sculpture: Artmax, artmaxfurniture.com // Chenille chair: Jessica Charles, jessicacharles.com // Brass sphere on floor // Chamcha end tables: The Phillips Collection, phillipscollection.com // Étagère: Century Furniture, centuryfurniture.com // Large print: Iconic Pineapple // Acrylic art flanking curio: Art Guild America // Chrome reading lamp: Visual Comfort & Co. // Rug: Shaver-Ramsey // In étagère: Custom books: E. Lawrence, elawrencelt.com // Bookends: Arteriors // Sculptures: Global Views, globalviews.com // Vase: Cyan Design // Glass bowl: Bradburn Home, bradburnhome.com // Greenery: Distinctive Designs, distinctivedesigns.com // Bookends: Cyan Design // Stacked boxes: The Phillips Collection

GAME TABLE AREA Chest with burl doors: Theodore Alexander, theodorealexander.com // Lamp: Uttermost, uttermost.com // Ming horse: Speer Collection // Prints: Art and Frame on F. Schumacher grasscloth wallcovering // Game table and chairs: Lorts, lorts.com // Textured chrome console: Hancock & Moore, hancockandmoore.com // Dunhuang bronze dancer: SPI Home, spi-home.com // Orchids: Winward International, winwardsilks.com

BAR AREA Framed agates: Prestige Art Studios, prestigeartstudios.com // Small framed art pieces: The Paragon, theparagon.com // Dragon tree root: Arteriors // Floral arrangement: Flower Art // Color-block framed piece by stairs: The Paragon // Slab: Dekton, at Cosentino, cosentino.com // Wine pegs, custom cabinetry: Luxe Kitchens and Interiors // Hardware: Emtek, at Luxe Kitchens & Interiors

LOWER-LEVEL BEDROOM PAGE 121

Custom-upholstered Blythe queen bed, with Como king duvet in blue, Gabor faux-mink coverlet, Delano shams and Gigi 24-inch rabbit fur pillows; silver crushed-velvet pillow, Terrene table lamps, faux horn tiles side table, Jeremy Grey Legend marble-top console, Mongolian natural-hair Sullivan ottomans, Carillo faux-horn mirror, Tina Turner print, Greer leather tray, selenite bookends; free-form quartz; black Asher carved boxes; silver rain drums, all at HW Home // Closet system: Closet Factory // Bathroom artwork: "Aviva Lemon Trees" toile print, HW Home

PATIO PAGES 122-123

Seating: Tropitone, tropitone.com // Pillows, ottomans: Casual Cushion Corp., casualcushion.com // Bar table and stools: Hanamint, hanamint.com // Umbrella: Treasure Garden, treasuregarden.com // Grill: Saber, saberglass.com // Outdoor kitchen: Challenger Designs, challengerdesignsllc.com, all at Christy Sports, christysports.com // Fire pit: Distinctive Mantel Designs // Mugs, platter, utensils: Target // Wood plank, wine glasses: World Market // Blue chairs: Indosoul, indosoul.com.au, special order at Christy Sports

2017 SHOWHOUSE VENDORS

ABATEMENT: Tazman Geoscience

ARCHITECTURE: Alvarez Morris Architecture

AUTOMOBILES: Audi of Denver, McDonald Volvo

BATH & DOOR HARDWARE: Donated by Taymor through Rio Grande Co.

BRICK WORK: D&H Construction

BROKER: Courtney Ranson/Perry & Co.

BUILDER: Caliber Construction

CABINETRY (EXCEPT MUDROOM): Luxe Kitchens and Interiors

CARPETS, HARDWOODS AND BATH COUNTER-TOPS, PLUS TILE FLOOR INSTALLATION: Images Flooring

CLEANING: XB Cleaning Services

CLOSETS: Closet Factory

CONCRETE & FOUNDATION WORK: RMS Concrete, Metro Foundation Supply Co.

DEMO: Mendoza Demolition Services

DRYWALL: 4 Star Drywall

ELECTRICAL: Vertical Electric

EXTERIOR DOORS & WINDOWS: Pella

FENCING: No Hassle Fence

EXTERIOR SIDING: Boral

FIREPLACES, SURROUNDS & OUTDOOR FIREPIT: Distinctive Mantel Designs

FIREPLACES: Donated by European Home and The Fireplace Boutique

FOUNDATION: RMS Concrete

FRAMING: Select Building Group

GARAGE DOORS: Wayne Dalton/Overhead Door Co.

GARAGE FLOOR: Specialty Poxy Coatings

GLASS & MIRRORS, INTERIOR & EXTERIOR: Red Rock Glass

HVAC: Smith & Willis

INSULATION: Basic Insulation

INTERIOR & EXTERIOR RAILINGS: McSwain Metal

INTERIOR TRIM, MUDROOM CABINETRY: Barsch Woodworks

KITCHEN & LAUNDRY ROOM APPLIANCES: Specialty Appliance

KITCHEN COUNTERS: Cosentino (slabs); Colorado Stone Ltd. (fabricator)

LANDSCAPING: Innovative Design

LIGHTING: The Lighting Studio

LOW-VOLTAGE WORK: Javo Solutions

LUMBER: Alpine Lumber Co.

PAINT: Guiry's Color Source

PAINTING, INTERIOR & EXTERIOR: Mod Paint Works

PAINT ON BRICK EXTERIOR: Romabio mineral paint

PLUMBING: Plumb On

PLUMBING FIXTURES: Ultra Design Center

PLAN PRINTING: Rocky Mountain Blueprints

ROOF & GUTTERS: B&L Roofing

ROOFING MATERIALS: Sponsored by Beacon Roof Supply

SOILS TESTING: Colorado Geoscience & Design, Tasman Geosciences

STAIRS: All American Stair

STRUCTURAL ENGINEERING: Henderson Engineering

SURVEYING: AAA Surveying, Barron Land

TEMPORARY FENCING: CAM Services

TILES: Decorative Materials

TREE MAINTENANCE: Colorado Tree & Lawn Specialists

WALLPAPER INSTALLATION: Denver-West Wallcoverings

WARRANTY MANAGEMENT: ProHome Colorado

WASTE MANAGEMENT: Liberty Waste Management

WATER & SEWER LATERALS: Pipe Control LLC

WATER HEATER: Ferguson

WATERPROOFING: AAA Waterproofing